

Wilder Connections Engagement & Learning Lead Recruitment Pack

Do you have a passion for inspiring and engaging people with the natural world? Are you experienced in nature-based wellbeing, and/or outdoor learning? Can you lead and motivate a team? Do you want to be part of a ground-breaking project to realise learning and wellbeing opportunities around an estate-wide nature recovery project?

Post:	Wilder Connections – Engagement & Learning Lead
Hours:	37.5 hours per week
Location:	Doddington Estate, Doddington, Lincoln LN6 4RU
Accommodation:	Possibility of on-site accommodation
Starting Salary:	£32,500 per annum.
Responsible To:	Project Manager/Claire Birch
Responsible For:	Education Delivery Officer; Alternative Provision Ranger; Volunteer Coordinator; Administrator
Application Deadline:	9am, 29 January 2024

Wilder Connections

The Doddington Hall Conservation Charity has set up the [Wilder Connections](#) project in order to ensure that the unique opportunities presented by [Wilder Doddington](#) are seized and developed, ensuring:

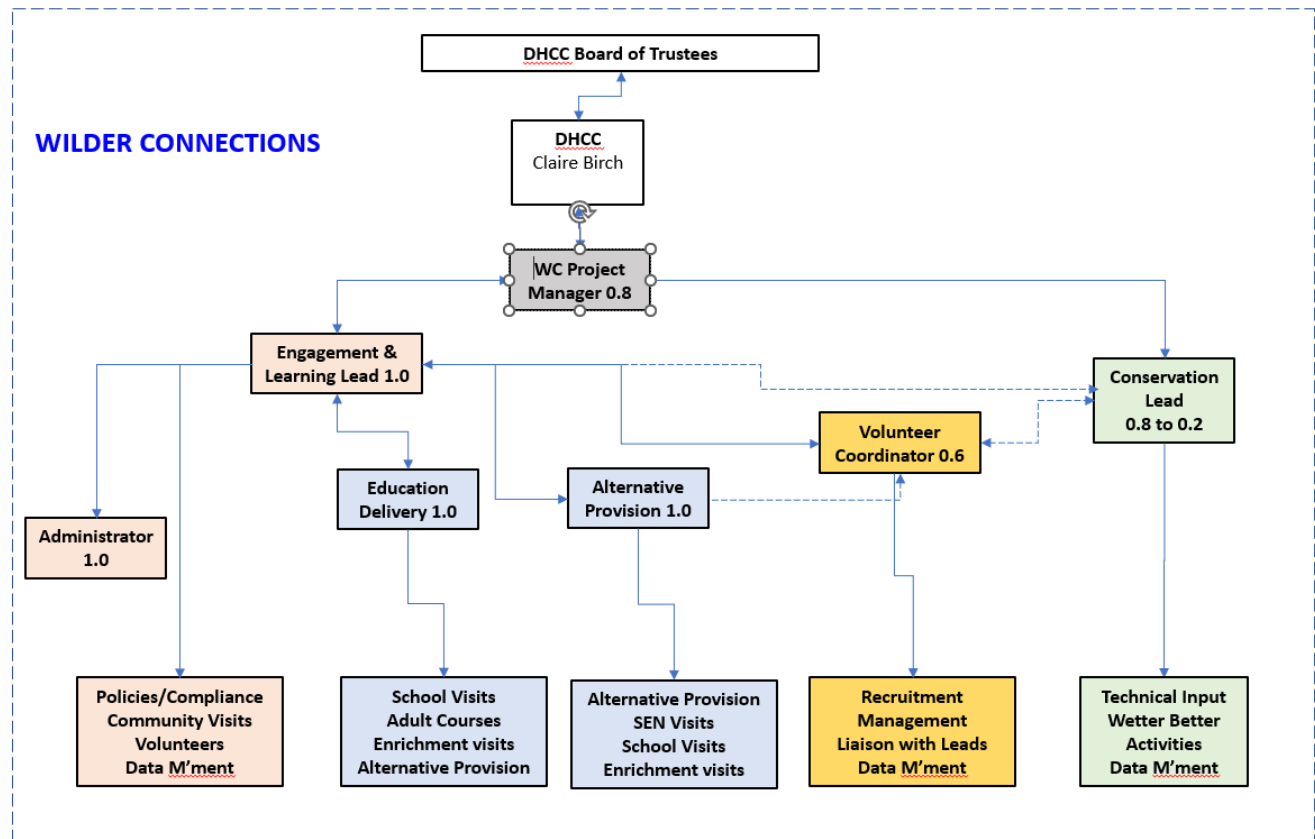
- Wilder Doddington's ecological impact is maximised
- That we realise the social impact of the nature recovery for the local community:
 - **Empowering** diverse people through nature connectedness
 - Delivering opportunities for local people to take action on climate and nature - at home, at Doddington, and beyond - **People-Powered nature recovery**
- That we inspire other landowners and managers, policy-makers, opinion-formers, funders and Third Sector organisations to take similar approaches that realise the **full** value of nature: ecological, social and economic

The project is being funded by a National Lottery Heritage Fund grant with additional support from Doddington Farms LLP and Anglian Water.

The main activity objectives for the project are outlined on our [website](#).

Project Team

The project team includes six people working on both a full and part-time basis as indicated in the chart below. The Engagement & Learning Lead is a key role in the development and management of the project.



The Wilder Connection project team will also work closely with the Wilder Doddington team which manages the estate's rewilding – the key resource of the Wilder Connections project.

Role Description

The Engagement and Learning Lead ("ELL") will manage and coordinate the delivery of the Wilder Connections community engagement and learning programme including delivery of engagement activities alongside other members of the delivery team. This will involve both strategic development of the project and its day-to-day implementation.

The project involves a number of project partners including the Lincolnshire Wildlife Trust ("LWT"), University of Lincoln, River Restoration Centre/Freshwater Habitats Trust and local community development groups. The Doddington Hall Conservation Charity and LWT will be jointly promoting and delivering school visits across the Doddington and Whisby (LWT) sites. There will therefore be a need for liaison with all partners at every level to ensure smooth administration and delivery of this joint venture.

The ELL will, whilst liaising with the Wilder Doddington project manager, manage the work of the Volunteer coordinator to support the community engagement and learning programme.

The ELL will develop and manage networks, partnerships and engagement opportunities with community groups, charities, schools and other educational, social care, mental health and community support providers.

By ensuring the appropriate policies and procedures are in place, the ELL will ensure that all engagement and learning activities delivered by Wilder Connections meet the standards set by Doddington Hall Conservation Charity, fulfil the Wilder Connections project outcomes, dovetail with other elements of the project, and adhere to best-practice guidance on safeguarding and health and safety.

The ELL will be a member of the Senior Management Team (“SMT”) which will include Claire Birch, the Project Manager and the Conservation Lead. The SMT is responsible for:

- business planning, pricing policies and marketing strategies
- financial management and administration of Wilder Connections project
- fundraising
- commissioning advisers and consultants
- Staff and HR
- Evaluation liaison
- Legacy planning

Duties & Responsibilities

- Create a wide network of project partners by working with community stakeholders to develop existing partnerships and develop new ones.
- Build on the pilot work undertaken during the development phase of the project to create a community engagement programme for community groups and organisations. Ensure that this meets both the needs of the community, and the project aims and outcomes.
- Ensure that all community engagement and learning activities are delivered to a high standard and adhere to regulations and best practice guidelines for health and safety and safeguarding. You will be jointly responsible for leading on project safeguarding responsibilities.
- Delivery of engagement and learning activities.
- Be responsible ensuring that the community engagement and learning activities adhere to the NLHF best practice guidance on equality, diversity and inclusion and that the Charity’s EDIB statement is applied across all activities; creating a welcoming environment for all project participants. Ensure the Wilder Connections project delivery team consistently implement these measures across the project.
- Oversee the development and running of the beneficiary and stakeholder advisory group.
- Manage the community engagement and learning budget and help to ensure that the project meets its income generation targets.
- Manage the Visitor Experience Plan.
- Be responsible for the internal monitoring and evaluation of the community engagement and learning activities. This will involve keeping appropriate records, developing monitoring and evaluation systems and processes and collaborating with the external project evaluators.
- Write quarterly project reports, for community engagement and learning, to be presented to the SMT meetings and as required for NLHF.
- Represent and be an ambassador for the Doddington Hall Conservation Charity; work to support its mission, vision and values for ensuring that Doddington Hall Conservation Charity’s EDIB strategy.
- Be flexible and willing to carry out other duties as may arise (commensurate with your role) to support the overall success of the Wilder Connections Project.
- Work collaboratively with the Wilder Connections team.
- Abide by Doddington Hall Conservation Charity’s policies, procedures and code of conduct. Always follow good working practice.
- Take reasonable care of your own health and safety.
- Be willing to undertake further training and professional development commensurate with your role.

Person Specification- Engagement & Learning Lead

E= Essential criteria, D= Desirable criteria

Experience

- Minimum of 2 years' working in a community or education setting/working with school-aged children (E)
- Experience recruiting, supporting and training diverse volunteers/people living with disadvantage and/ or disability (E)
- Delivering community engagement activities (E), in outdoor settings (D)
- Experience designing and delivering outdoor, nature-based activities designed to connect diverse audiences to nature (E)
- Good knowledge of the community to be supported (D)
- Providing training to others (D)
- Project, staff and budget management (D)

Skills & Abilities

- Good verbal and written communication skills (E)
- Computer literate - including a good working knowledge of Microsoft office, Excel and social media (E)
- Ability to comfortably communicate with a diverse range of people (E)
- Professional, friendly and confident manner (E)
- Strong organisation and prioritisation skills (E)
- Leadership and collaboration (E)
- The ability to deal with situations sensitively (E)
- Full valid Driving License (E)
- Full D1 entitlement with minibus driving experience / certification (D)
- PGCE / PGDE or teacher training (D)
- Experience of undertaking risk assessments (D)
- First Aid qualification (D)
- Knowledge of National Curriculum, Health & Wellbeing agenda in schools (D)
- Knowledge of CPD design & requirements for staff training (D)
- Safeguarding (D)

Education/Training/Qualifications

- Educated to degree level (D)
- Equality, diversity and inclusion (D)
- Data protection (D)

Circumstances

- Ability to work some evenings / weekends / Bank Holidays (E)
- Ability to travel over rough/ uneven terrain and walk long distances to accompany field trips etc (E)
- Ability to lift / carry heavy objects e.g. tree stumps / logs / equipment / tools etc (D)

Application form

Please [click here](#) to access the online application form.

Or if you prefer, you can download an application form [here](#).

Deadline for applications is 9am on 29 January 2024.

Please contact david@doddingtonhall.com if you have any queries / require additional information.