



LEARNING & *Discovery at* WILDER DODDINGTON



We want everyone to feel inspired by nature, to be curious about how nature connects to our health and the health of the planet.

▲ Students preparing to explore the Fishpond

Wilder Doddington OUR VISION

Wilder Doddington is an innovative 400-year project to rewild, bringing nature back to the estate.

We believe that everyone, young and old, should have the opportunity to discover and connect with nature. We know that regular connection to nature has positive effects on health and wellbeing and is vital to encourage people to take action to help wildlife and the environment.

Our learning programmes allow people to do this while they explore our developing landscape. Wilder Doddington offers a range of visits tailored to each school or group's particular needs.

Our primary programme seeks to inspire and create awe, delivering learning and at the same time building confidence and self-esteem.

A Level programmes cover topics across Ecology and Geography making full use of the resources at Wilder Doddington including its skilled team and partners. We support GCSE studies together with cross-curricula programmes for KS3, by engaging students in activities in the transforming landscape.

FOR MORE INFORMATION PLEASE VISIT:
DODDINGTONHALL.COM/WILDER/LEARNING

GET IN TOUCH: WILDER@DODDINGTONHALL.COM



Primary SESSION

Session

Half Days



▲ Students preparing to explore the Fishpond

All sessions can be adapted to EYFS, KS1 and KS2, unless otherwise stated.

● **Terrific Trees** ✨

Focusing on these giants of nature we will explore them with our senses and find out what lives in, on and around them.

● **Plant Detectives** ✨

Learn about the lifecycle of a plant whilst exploring Doddington. Find a wide variety of species across the landscape. Look closely at the plants and see their different parts.

● **Woodland Workshop** ✨ 🪓 🐾

Explore the woodland, try your hand at practical skills such as fire lighting and shelter building. Learn how we can use the woods whilst respecting nature and supporting the creatures who live there.

● **Nature's Inspiration** 🎨

Use natural materials to create art inspired by nature, out in the Wilder Doddington landscape. Student's produce an individual piece of art to take back to school.

● **Interesting Invertebrates** 🐾

Explore different habitats within the estate and discover the wide variety of that live within these habitats.

● **Fascinating Freshwater (Suitable for KS2 only)** 🐾

Discover the wonderful world beneath the surface of the pond. Learning about how different adaptations allow species to survive in this underwater world.

● **Wilder Habitats** ✨ 🐾

Find out about how the Doddington Estate is rewilding its landscape and explore the different habitats, this is creating. Consider how these habitats support a variety of species.

● **Discover Doddington** 🏰

Learn about the history of the Elizabethan house and the estate. Learn about how farming has changed and how the estate continues to develop to meet the needs of current and future generations.

Each course can be tailored to your groups requirements, as can our plan for the day.

Our taster timetable for a Primary Day visit can be seen overleaf ▶

KEY: ✨ Plants
 🌞 Seasons
 🐾 Living things & their habitat
 🪓 Physical Education
 🏰 History
 🎨 Art

Within all sessions we will help students to develop:

1 Confidence being outdoors

2 Spoken Language

3 Vocabulary

4 Nature Connectedness

5 Understanding of nature and the landscape

PLUS:

Transferable skills such as observational skills, team work, sharing and resilience.

Taster timetable for a PRIMARY DAY

Session (Time)	Activity
Arrival 10am	<p>Meet with your Wilder Doddington Leader Introduction and Safety Briefing.</p> <p>Snack break (if required).</p>
Morning	<p>Activity Session 1 Chosen from our session summaries.</p>
12.00 Lunch (45 mins)	<p>Lunch Time for a picnic lunch on the lawn, free play and toilet visits, managed by school staff.</p>
Afternoon	<p>Activity Session 2 Chosen from our session summaries.</p>
2.15pm	<p>Departure Toilets and depart at 2.30pm</p>



Schools also bring groups to Doddington to develop their Lincolnshire Agricultural Society Schools' Challenge project.

Please talk to our team about Schools' Challenge relevant course bookings, or engagement visits for groups not directly curriculum related.

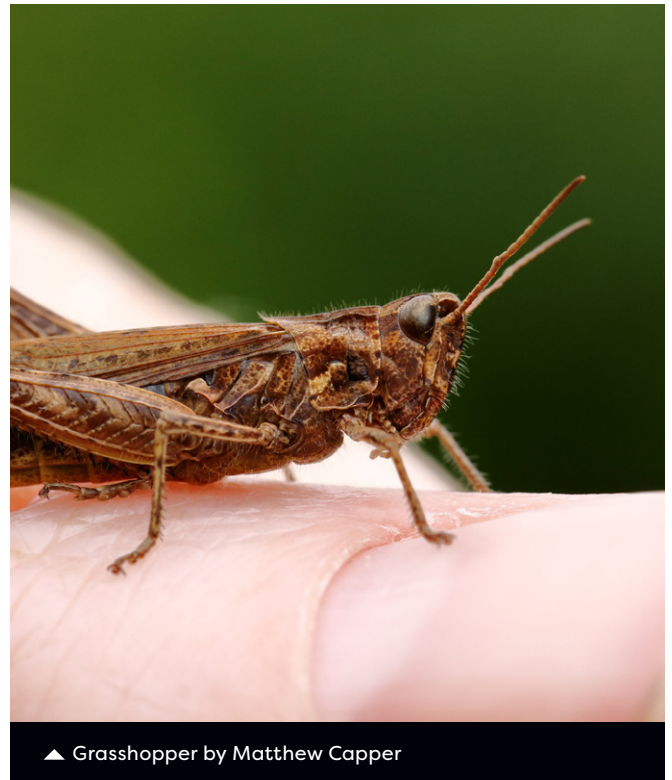
TO ENQUIRE OR MAKE A BOOKING
PLEASE EMAIL:
WILDER@DODDINGTONHALL.COM

Did you know we also offer Teacher CPD opportunities and can host inset days?

GET IN CONTACT WITH OUR TEAM FOR MORE DETAILS.



Nature Based Learning AT WILDER DODDINGTON



▲ Grasshopper by Matthew Capper

Wilder Doddington is packed with a huge diversity of wildlife across its 1900 acres. The site is grazed by a range of livestock including Lincoln Red cattle, Mangalitza and Tamworth pigs and Exmoor ponies.

This is a unique opportunity to engage students in a changing landscape that is managed with nature in mind, whilst still producing food and creating lots of employment opportunities that support the local social landscape.

We can adapt the delivery according to learning level and can explore increasingly complex concepts of land use. These include healthy soils (physical, biological and chemical), sustainability, food production, food self-sufficiency (we produce high quality nature friendly forage-fed beef, venison and pork), economics, climate adaptation, and water management for flood and drought resilience. In addition, we use these topics as a backdrop for multiple academic subjects from sciences through history, physical and human geography to art and journalism.

Our focus is on nature connection and wellbeing as well as meeting curriculum requirements. We offer a range of visits tailored to each school and group's particular needs.

Young Wildlings our Primary programme seeks to inspire and create awe, delivering learning and at the same time helping to build confidence and self-esteem.

Wild Learning our Secondary programmes provide greater in-depth study, particularly those targeted at A-Level courses. These make full use of Wilder Doddington's wide range of physical resources and our skilled team of experts.

Wilder Horizons our Alternative Provision (AP) programme is developed alongside learners and schools. At Doddington we understand its bespoke nature and our outdoor environment provides a safe, welcoming space where learners can experience a more holistic approach to learning. We can provide customised courses helping learners to build confidence, skills and build aspirations.

The Wild House, our state-of-the-art facilities for learning and engagement, opens spring 2026, and includes two large classrooms, lab, offices and a volunteer hub. At the heart of the estate in its own dedicated space, it will be the first Passivhaus Premium commercial building in England. This means it will be highly efficient and will generate more energy than it uses.

The Wilder LEARNING TEAM

Our learning delivery team is full of experience with team members having worked previously in outdoor learning, the heritage and culture service, food production, academic research and lecturing, community development and engagement, wildlife conservation and reserve management.



**ROSIE
MOLTON**

Education Delivery Officer

Rosie has over 10 years' experience working in outdoor learning settings across the UK, predominantly delivering to school and college groups for the Field Studies Council. She has also worked with SEND students in a variety of settings, both inside and outside the classroom.

With a curiosity for nature and the landscape, a degree in Geography and Mathematics, and a Master's in Education focusing on Special Education, Rosie inspires students to question and discover the world around them. At Wilder Doddington she designs and delivers curriculum-linked outdoor learning, helping young people connect to nature and engage first-hand with wilding and the wider environment.



**MATTHEW
CAPPER**

Conservation Adviser

Matthew is our Conservation Adviser, helping to deliver Doddington's ecological vision. He has many years' experience in nature conservation, including managing several RSPB reserves.

Passionate about connecting people with nature, he has led education and engagement activities for organisations such as the National Trust, Severn Trent Water and the Peak District National Park Authority. He was the RSPB's People Engagement Manager for Northern England and more recently Head of Public Engagement and Communications for the Lincolnshire Wildlife Trust. His love of wildlife has taken him around the world as a nature guide for a leading wildlife tour company.



**ISOBEL
WRIGHT**

Wilder Project Manager

Isobel leads the Wilder Doddington project and 'holds the vision' for restoring nature across the estate using natural processes. Raised on a small family farm and trained in agriculture, she focuses on sustainability and the bigger picture.

Her aim is to produce nutritious food while increasing biodiversity, improving soils and delivering clean air and water, alongside tackling climate change, flood and drought resilience and creating access to nature and outdoor wellbeing for local communities. Previously an agricultural and organic farming consultant, she most recently taught and researched at the University of Lincoln. She is planning Wilder Doddington for the next 10, 100 and even 400 years.



**LISA
BRUMPTON**

Project Support Officer

Lisa has over 10 years' experience working in the culture service for Lincolnshire County Council. This has included delivering historical and art-inspired workshops and tours to participants from schools and other educational settings. She also has experience of delivering engaging, curriculum-based learning sessions for English Heritage.

Lisa encourages students to get involved and get creative while discovering the landscape and nature around them. At Wilder Doddington she supports education delivery, manages bookings, helps to coordinate volunteers and assists visiting groups, ensuring that visits to the wilding project are welcoming, well organised and memorable.