



DODDINGTON
HALL &
GARDENS

CORPORATE EVENTS

Meetings ◉ *Conferences* ◉ *Seminars* ◉ *Exhibitions*
Canapé & Drink Receptions ◉ *Networking Events* ◉ *Product Launches*



DODDINGTONHALL.COM

CONTENTS

<i>Coach House</i>	<i>03</i>
<i>Grain Store</i>	<i>06</i>
<i>Delegate rates</i>	<i>08</i>
<i>Meetings with a difference</i>	<i>09</i>
<i>Wilder Doddington</i>	<i>10</i>
<i>Food</i>	<i>12</i>
<i>Drinks</i>	<i>13</i>
<i>Next steps</i>	<i>14</i>
<i>Stay with us</i>	<i>15</i>
<i>Doddington Hall</i>	<i>16</i>
<i>Our philosophy</i>	<i>17</i>
<i>Parking & location</i>	<i>19</i>
<i>Terms & conditions</i>	<i>20</i>

Want to make an enquiry?

LEAH BARR

LEAHBARR@DODDINGTONHALL.COM

01522 812516

Photography credits

With thanks to: Christopher Chambers/Shutterstock, Rick Nunn, Heritage Photographic, Instinctive Photography, Lee Hellwing, Henry Lowther & One Love Photography



COACH HOUSE

*A calm, characterful setting
for productive time together*



Just metres from Doddington Hall, the Coach House offers a flexible space for corporate meetings. It seats 10 to 156 guests and includes catering and hospitality from our in-house kitchens.

Available Spaces

Boardroom: Ideal for smaller meetings at the boardroom table, it overlooks the Gatehouse lawn and secret walled garden.

Garden Room: Suitable for smaller meetings and events without a bar. Used for guest reception or break-out space. meetings, drinks receptions & dining. Access to the secret walled garden.

Green Wing: The largest space, featuring sliding glass doors opening onto the secret walled garden. Ideal for larger guest numbers. The bar is located here.

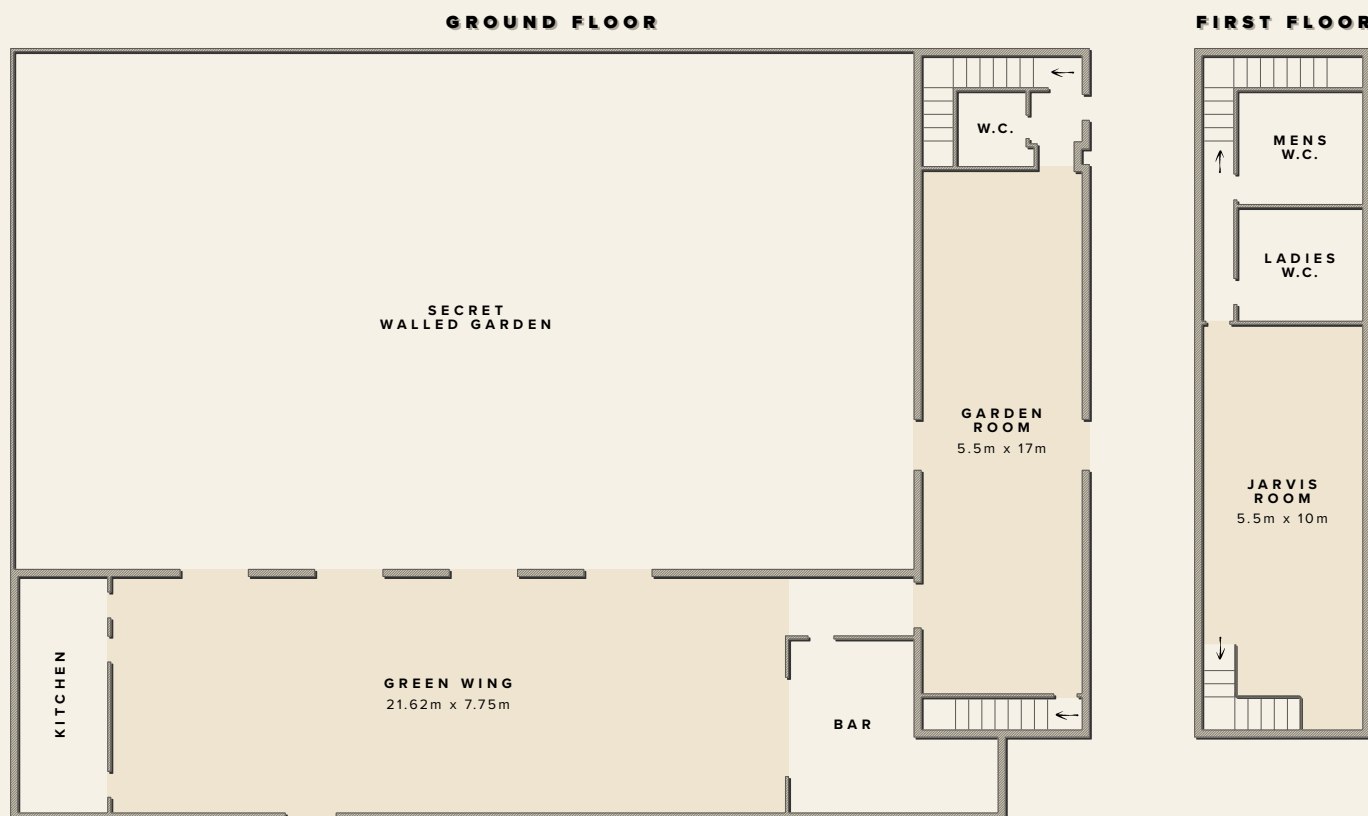
Bar Facilities

The Coach House has its own fully stocked and staffed bar, selling a full range of premium spirits, soft drinks, bottled ales along with draught beer and lager. We can also offer a cocktail menu.

Accessibility

The ground floor of the Coach House has full disabled access with a toilet and baby changing facilities. Access to the first floor is via stairs only.

EVENT SPACES



GREEN WING (21.62 x 7.75 metres)

A fantastic airy room, opening up on to the stunning private walled garden. Includes hire of the Garden Room.



ROOM HIRE RATES:

HALF DAY (UP TO 4 HOURS) £425.00 (MON-FRI)

FULL DAY (UP TO 8 HOURS) £685.00 (MON-FRI)

WEEKENDS £880.00

MAX. NUMBER OF DELEGATES IN EACH LAYOUT:

THEATRE 150

CABARET 100

BOARDROOM 40

DINING 156

* All room hire rates are exclusive of VAT.

** Please note that the layout plans are only indicative and not to scale.

EVENT SPACES

GARDEN ROOM (5.5 x 15 metres)

An intimate space located on the ground floor of our refurbished Elizabethan Coach House.



ROOM HIRE RATES:

HALF DAY (UP TO 4 HOURS)	£300.00 (MON-FRI)
--------------------------	-------------------

FULL DAY (UP TO 8 HOURS)	£425.00 (MON-FRI)
--------------------------	-------------------

WEEKENDS	£500.00
----------	---------

MAX. NUMBER OF DELEGATES IN EACH LAYOUT:

THEATRE	30
---------	----

CABARET	40
---------	----

BOARDROOM	30
-----------	----

DINING	40
--------	----

JARVIS ROOM (5.5 x 10 metres)

Walled Garden views from the first floor of our refurbished Elizabethan Coach House.



ROOM HIRE RATES:

HALF DAY (UP TO 4 HOURS)	£300.00 (MON-FRI)
--------------------------	-------------------

FULL DAY (UP TO 8 HOURS)	£425.00 (MON-FRI)
--------------------------	-------------------

WEEKENDS	£500.00
----------	---------

MAX. NUMBER OF DELEGATES IN EACH LAYOUT:

THEATRE	32
---------	----

CABARET	24
---------	----

BOARDROOM	14
-----------	----

DINING	32
--------	----

* All room hire rates are exclusive of VAT.

** Please note that the layout plans are only indicative and not to scale.

GRAIN STORE

A dynamic setting for collaborative and creative events



Just metres from Doddington Hall, the Grain Store offers a flexible space for corporate meetings. It seats 10 to 200 guests and includes catering and hospitality from our in-house kitchens.

The Space

As one of the estate's flagship spaces, the Grain Store operates as a café during the day. Corporate events are carefully coordinated to ensure the space works seamlessly for your meeting or event, with options for partial or full exclusivity discussed at enquiry stage.

A distinctive venue that inspires creativity, focus and meaningful connection.

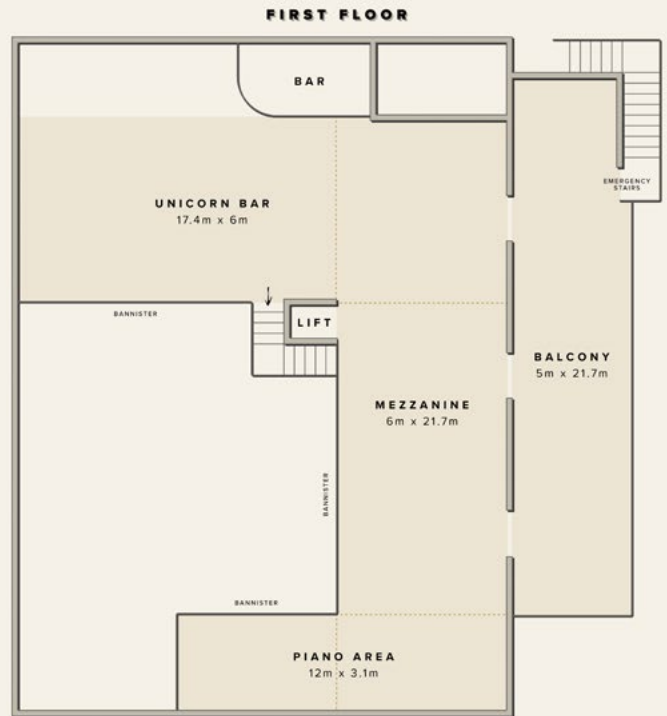
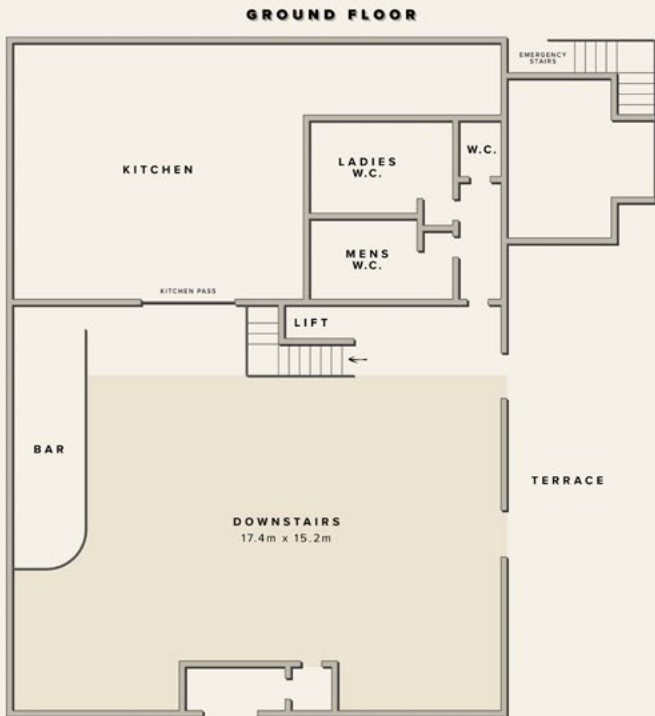
Bar Facilities

The Grain Store has two fully stocked and staffed bars, selling a full range of premium spirits, soft drinks, bottled ales along with draught beer and lager. We can also offer a cocktail menu.

Accessibility

The Grain Store has full disabled access with toilets and baby changing facilities on the ground floor. Access to the first floor is via stairs or lift.

EVENT SPACES



GRAIN STORE

The Grain Store has a flexible open-plan interior and the modern facilities provide an impressive, private setting ideal for corporate meetings and events.



HIRE RATES:

HALF DAY (UP TO 4 HOURS)	£500.00 (MON-FRI)
FULL DAY (UP TO 8 HOURS)	£800.00 (MON-FRI)
WEEKENDS	£1000.00

MAX. NUMBER OF DELEGATES IN EACH LAYOUT:

THEATRE	150
CABARET	100
BOARDROOM	40
DINING	200

* All room hire rates are exclusive of VAT.

** Please note that the layout plans are only indicative and not to scale.

DELEGATE RATES

Our full day, half day and boardroom packages provide a comprehensive, all-inclusive option for your event.

The packages include all of the essentials such as venue hire, refreshments, lunch and basic AV, providing a cost-effective solution and a smooth experience for organisers and attendees.

COACH HOUSE

Delegate Rates:

HALF DAY: £35 PER PERSON *(up to 4 hours)*

FULL DAY: £45 PER PERSON *(up to 8 hours)*

GRAIN STORE

Delegate Rates:

HALF DAY: £35 PER PERSON *(up to 4 hours)*

FULL DAY: £45 PER PERSON *(up to 8 hours)*

Minimum Numbers:

GARDEN ROOM: 20

GREEN WING: 40

BOARDROOM: 10

Minimum Numbers:

DOWNSTAIRS: 40

UNICORN BAR & MEZZANINE: 50

FULL BUILDING: 70

Includes:

- Room hire
- Data projector & screen with VGA connection
- 1 flipchart & pens
- Wi-Fi access
- Table sweets
- Iced water & elderflower cordial
- Up to 4 (3 for half day) servings of freshly brewed coffee & tea per delegate
- Speciality fruit & herbal tea selection
- Homemade biscuits on arrival
- Delegate buffet lunch

Includes:

- Room hire
- Data projector & screen with VGA connection
- 1 flipchart & pens
- Wi-Fi access
- Table sweets
- Iced water & elderflower cordial
- Up to 4 (3 for half day or evening) servings of freshly brewed coffee & tea per delegate
- Speciality fruit & herbal tea selection
- Homemade biscuits on arrival
- Delegate buffet

* All room hire rates are exclusive of VAT.

** Please note that if the timing of your event exceeds the allocated time allowance specified above, a charge of £50 per hour will be added to your booking. Any extensions to allocated time must be pre-booked and cannot always be guaranteed.

MEETINGS *with a* DIFFERENCE

Doddington Hall offers a range of additional activities and experiences to make your training or meeting day unique.

◆ Private Guided Tours of Doddington Hall

Step away from the meeting room and into over 400 years of history. A private guided tour offers a fascinating insight into the Hall and its stories, brought to life by our knowledgeable guides. >

◆ Garden Tours

Reconnect with nature on a guided or self-guided walk through our formal and wild gardens, including the Kitchen Garden that supplies our cafés and restaurant. A refreshing, grounding addition to any day. >

◆ Bike Hire from Giant Lincoln

Add an active element to your meeting with high-quality bike hire on site. Explore the estate and surrounding countryside, ideal for energising teams and sparking informal conversation. >

◆ Padel Court Hire

Bring energy and fun to your event with outdoor padel court hire. A sociable, accessible activity that works well for team bonding and friendly competition. >

◆ Private Wilder Doddington Tours

Explore Wilder Doddington on a guided tour of our rewilding project. A powerful way to connect teams with nature, sustainability and the wider landscape. >

◆ Uniform Collection Tours

Discover a remarkable collection of military uniforms, ideal for niche interest groups or those looking for something a little different and thought-provoking. >

◆ Exclusive Private Shopping Evenings

Give your guests exclusive access to our award-winning Farm Shop, Home Store, Country Clothing and Giant Lincoln Bike Shop. A relaxed and enjoyable way to end the day from 5pm. >

◆ Estate Shops & Catering

Enjoy beautifully curated retail spaces alongside relaxed estate dining. From local produce to seasonal dishes, guests can browse, eat and unwind all in one place. >



THE WILD HOUSE

Corporate Experiences



A pioneering, purpose-built space in the heart of the Wilder Doddington landscape, where teams can meet, think, refocus and reconnect with nature.

Opening in spring 2026, the Wild House offers an inspiring, purposeful setting away from the everyday.

As England's first Passivhaus Premium non-domestic building, it reflects a commitment to climate action and thoughtful design. A place built to give back.

With flexible layouts for 4 to 100 people, it's ideal for workshops, meetings, seminars, conferences and more, helping teams return with fresh perspective.

- Step out of the day-to-day and return with clearer thinking and stronger alignment.
- A setting that encourages better conversation, creativity and decision-making.
- Space indoors and out, shaped around your agenda and team.
- Choose from a range of optional experiences to design a unique day for your team (see overleaf).

Food For Thought

From breakfast to lunch, coffee breaks to canapés, we tailor catering to suit your day. Seasonal menus showcase pasture-fed Lincoln Red beef, fruit, herbs and vegetables from our Kitchen Garden, honey, game and foraged produce from the Doddington Estate and the finest locally sourced ingredients.

Stay

Extend your time on the estate with overnight accommodation across our cottages and ensuite rooms, with 28 bedrooms available.

Location

Doddington Hall Estate is 6 miles west of Lincoln, with easy access from the A46 and A57.





ENGAGE YOUR TEAM WITH *Wilder Doddington*

Step beyond the meeting room with optional experiences designed to bring teams together and refresh thinking.

Guided Tours and Safaris

Walking, vehicle, trailer or e-bike

Experience Wilder Doddington first-hand on a guided tour that takes you off the beaten track.

Shared perspective that brings teams together and sparks new ideas.

Biodiversity Net Gain

Exploring Biodiversity Net Gain habitat units or wider nature-based solutions and offsetting? Get in touch to discuss how we can support your biodiversity and sustainability goals.

[EXPLORE BNG](#)

Team Building

Hands-on micro-volunteering or surveys

Choose from practical habitat tasks or guided wildlife surveys led by the Wilder team.

Purposeful teamwork that builds pride, momentum and connection to place.

Sponsorship Opportunities

For organisations interested in longer-term partnerships, sponsorship can grow naturally from a corporate day. We will shape opportunities around your aims and the outcomes you want to support.

Wellbeing

Support focus, energy and morale with nature-led wellbeing experiences tailored to your team.

- Mindfulness walks and foraging
- Creative activities and nature connection
- Yoga

A change of pace that supports clear thinking and calm.



Wilder Doddington corporate opportunities

GET IN TOUCH TO DISCOVER MORE

MARK@DODDINGTONHALL.COM



FOOD

Whether it's a large conference or a small boardroom meeting, our catering menus are designed to suit every occasion. Our seasonal menus showcase our own pasture-fed Lincoln Red beef, game and Kitchen Garden produce from the Doddington Estate along with the finest locally sourced ingredients.

Breakfast & Brunch

A fresh and nourishing start to the day, ideal for early meetings designed to set the tone for a productive event.

Lunch

With a variety of choices, our lunch buffets are perfect for anything from casual meetings to larger gatherings.

Canapés

Beautifully crafted bitesize canapés ideal for receptions and networking.

Bowls

Designed to encourage relaxed networking whilst delivering quality and flavour.

Afternoon Tea

A refined selection of delicate sandwiches, homemade patisserie and freshly baked scones.

Street Food

A vibrant selection of Doddington inspired street food dishes, ideal for informal events offering bold flavours.

Banqueting

Ideal for formal occasions and celebratory events.

Feast

A generous shared dining experience creating a relaxed atmosphere.

● On confirmation of booking, we can help tailor the menu based on your likes and dislikes. Please make us aware of any allergies or special dietary requirements.



DRINKS

Wow your guests with a drinks reception hosted in the Coach House, Secret Garden or Grain Store. All you need to do is choose the quantity and selection of drinks.

Tea & Coffee

Lincolnshire tea, freshly brewed coffee and premium matcha are available throughout your booking to keep your team refreshed and focused. Perfectly suited to corporate meetings, workshops and all-day events

Soft Drinks

A selection of soft drinks are available, including Belvoir presses, seasonal Kitchen Garden fruit smoothies and natural fruit juices. Ideal for keeping guests energised, excellent for our wellness packages that include padel and cycling.

Prosecco & Beers Mix

Our most popular guest choice for a drinks reception. It's a 50/50 split of our prosecco and a selection of bottled beers.

Spritz & Cocktails

Alternatively, you can pick your drinks from our spritz menu. Spritz menu items are served with ice and a fresh fruit garnish. They're very popular with guests & look great too.

Wine

Ideal for formal occasions and celebratory events. Your choice from our extensive wine list, priced by the bottle.

-
- *We're more than happy to provide guidance, and we welcome your ideas, to help make your perfect selection.*
 - *We find that 1 to 2 drinks (as a minimum) per guest works well during a short reception, including non-alcoholic options. Ask us about adding a bar tab or pay bar alongside a selection of canapes.*

Your NEXT STEPS



Viewings & Appointments

A member of our team will meet with you and show you around our facilities. Alternatively, we could talk on the telephone or correspond via email to discuss the details of your event. Depending on bookings, week days work well for us.

Bookings

After an initial viewing to talk through your ideas and the options available, we can put together a bespoke quote based on your specific requirements. Offering help and advice, we will do all we can to help you create your perfect event.

We are happy to hold a provisional date for 14 days while you consider options. After this period, we require a signed copy of the booking form along with the deposit in order to secure your chosen date.

Enquiry Considerations

Before making your enquiry, we recommend that you consider the below points;

- Agenda and timings
- Your anticipated guest numbers
- Menu choices & special dietary requirements
- Drinks provision
- Relevant suppliers – You will need to provide a full list of contact
- Details for all suppliers who will be coming to Doddington Hall

Please refer to our Terms & Conditions on the final page for our payment terms.

Want to make an enquiry?

LEAH BARR

LEAHBARR@DODDINGTONHALL.COM
01522 812516



STAY *with* *us* HERE

The Doddington Estate has a total of 28 bedrooms in a series of cottages and a converted stable yard which are available for short term hire all year round.

Some locations are self-catering and others are room only but since most of our accommodation is located within a couple of minutes' walk of the Hall, Farm Shop, cafés and restaurant you won't have to go too far to find delicious food whichever you choose!

ACCOMMODATION OPTIONS:

THE STABLE YARD	SLEEPS 1-14 7 BEDROOMS
THE BUNGALOW	SLEEPS 4 2 BEDROOMS
GRANGE FARM	SLEEPS 8 4 BEDROOMS
SHAKESPEARE COTTAGE	SLEEPS 8 4 BEDROOMS
HOLLY FARM	SLEEPS 10 5 BEDROOMS
THE BREWHOUSE	SLEEPS 12 6 BEDROOMS

To book or for further information

FOR MORE IMAGES AND DETAILED INFORMATION,
PLEASE VISIT: DODDINGTONHALL.COM/HOLIDAY-COTTAGES

CONTACT

STAY@DODDINGTONHALL.COM
01522 699162



© Claire & James Birch, owners of Doddington Hall

Built between 1595 and 1600 by leading Elizabethan architect Robert Smythson, Doddington Hall has changed hands over the centuries but has never been sold or cleared, remaining a cherished family home.

A fine example of a late Elizabethan mansion, Doddington is alive with history and interest. Built for Thomas Tailor, Registrar to the Bishop of Lincoln, its mellow brick exterior and walled courtyards remain largely unchanged.

In 1749, the Hall was inherited by John Delaval of Seaton Delaval in Northumberland, who carried out an extensive internal redecoration, introducing the light and elegant Georgian style still evident today.

The family name has changed as the house has been passed through the female line five times, but the house has never been sold or cleared out.

In 1830, Colonel George Jarvis inherited the Hall from Sarah Gunman, its heiress, and today's owners are his direct descendants.

Since 2006, Doddington has been the much-loved home of Claire and James Birch, who continue the work of Claire's parents in maintaining the Hall and developing the wider Doddington Estate.

A visit to Doddington offers insight into family life through the ages and the ongoing challenges of caring for a remarkable historic estate in the 21st century.



Our Green PHILOSOPHY

At Doddington Hall we proudly showcase seasonal produce from our estate and trusted local suppliers.

Kitchen Garden & Estate Produce

Located just a stone's throw from the Hall, the walled Kitchen Garden provides abundant fresh produce that shapes our menus and reduces food miles. Organic and no dig techniques, crop rotation and natural pest control ensure high yields without chemical fertilisers or pesticides.

We grow a wide range of seasonal fruit, vegetables and herbs including rhubarb, beetroot, kale, leeks, purple sprouting broccoli, tomatoes, squash, figs and much more. We also offer our own Doddington honey and foraged wild garlic. Beyond the estate, we seek out the best local growers and producers from Lincolnshire and surrounding counties.

Reared on the Estate

Pasture-fed beef, pheasant, partridge, pigeon, rabbit and wild venison are all produced here with care for quality and sustainability.

Lincoln Red Cattle

A driving force of our Wilder Doddington project is our herd of rare breed and pasture-fed Lincoln Red cattle which is helping to build biodiversity and carbon sequestration in our soils and vegetation. Our beef is aged for at least 28 days and is simply delicious.

01 **BIOMASS**

The Coach House, Grain Store, Hall, Farm Shop Café, estate shops and holiday cottages are heated by a biomass boiler fuelled with wood chip. The wood chip is produced from sustainable woodland from the estate.

05 **LOW CARBON**

We are committed to sourcing food and products with a low carbon footprint.

02 **LOW ENERGY**

Natural ventilation and low energy appliances are used wherever we can.

06 **ETHICAL SOURCING**

We seek out Fairtrade and artisan produced products.

03 **RAIN WATER**

Rain water is collected for use in the gardens and our low-flush loos.

07 **REDUCED WASTE**

Packaging and waste are minimised wherever possible.

04 **SOLAR POWER**

We harness solar power with a series of panels on a number of properties around the estate.

08 **RECYCLING**

We encourage recycling and reuse and try to source products that are made out of recycled materials.

We are determined to be as environmentally friendly as possible, considering our impact on today & tomorrow.





Doddington Hall is located 6 miles West of Lincoln on the B1190. It is signposted from the A46 Newark to Lincoln Road. It is also signposted from the A57 between the A1 and Lincoln.

Getting to Doddington Hall

By Train: Doddington is 20 minutes from Newark Northgate and Lincoln train stations, and 40 minutes from Retford train station. Trains from London take 1 hour 15 minutes to Newark. VIP transport from and to train station available upon request.

National Express East Coast: If you arrive by train to Lincoln Central Station or Newark Northgate Station you can get to Doddington Hall by taxi.

By Bicycle: Doddington is near the Sustrans from Harby to Lincoln Cycling Route. A purpose built cycle route 'Georgie Twigg Track' links Doddington to National Cycle Network Route 64.

Car parking

Doddington Hall has exclusive, complimentary parking for you and your guests. There are five EV chargers available in the Grain Store car park.

DODDINGTON HALL & GARDENS
 MAIN STREET, DODDINGTON,
 LINCOLN, LN6 4RU

CAR TRAVEL TIMES:

A1 NORTH	20 MINUTES
A1 SOUTH	20 MINUTES
EAST MIDLANDS AIRPORT	90 MINUTES
HUMBERSIDE AIRPORT	45-55 MINUTES
NEWARK	20 MINUTES
LINCOLN	15 MINUTES
NOTTINGHAM	60 MINUTES
SHEFFIELD	45 MINUTES

TERMS & CONDITIONS

- 01 Bookings are not confirmed until both the completed booking form and non-returnable deposit, as required, are received by Doddington Hall.
- 02 The balance of the total amount payable must be paid in full 7 days before the event unless agreed otherwise in advance.
- 03 In the event that the client cancels a confirmed booking, the deposit is non-refundable.
- 04 With regard to catering requirements, final numbers must be agreed with Doddington Hall at least 14 days prior to the event, after which no refunds will be made if guest numbers decrease. Any subsequent cancellations regarding refreshments pre-ordered (excluding tea/coffee) must be paid for in full.
- 05 Doddington Hall shall not be obliged to credit a forfeited deposit against a future booking.
- 06 Doddington Hall requires the right (only in the most severe of circumstances) to cancel a confirmed booking should circumstances outside its control so require.
- 07 Doddington Hall reserves the right to refuse any booking without reason.
- 08 Catering will be provided by the Doddington Catering Team.
- 09 The venues are licensed to sell alcoholic drinks. However, alcoholic beverages are only available to the client when arranged in advance. If a pay bar is required Doddington Hall will arrange and provide all facilities.
- 10 Doddington Hall reserves the right to have their staff evict any persons attending a function, who behave abusively, or unreasonably and any alcohol not purchased from Doddington Hall will be confiscated.
- 11 Where Doddington Hall is requested to book facilities and/or services on behalf of the Client or its delegates with third parties, it will do so in good faith but cannot be held liable should the standard of those services prove deficient, nor the acts or omissions from such third parties.
- 12 The Client must keep within the maximum numbers permitted by fire regulations. The maximum number of guests allowed in the Coach House is 180 and 300 in the Grain Store.
- 13 Doddington Hall is a non-smoking site.
- 14 The Client shall be responsible for any damage caused to the venue or the furnishing, utensils, and equipment or any part of the building or garden, by any act, default or neglect of the Client, subcontractor or guest of the Client and shall pay to Doddington Hall on demand the amount required to make good any such damage and or loss of business caused as a result.
- 15 Where the Client employs subcontractors or third parties to assist them with their event, it is the Client's responsibility to ensure that they are properly insured and they comply with all terms and conditions laid down by Doddington Hall and any current Health & Safety legislation.
- 16 If signs are to be erected in the venue, the Client must seek prior approval.
- 17 Clients can arrange their own suppliers (except caterers, bar and DJ) but we do ask that you inform us of their details.
- 18 If the Client wishes to use the service of a DJ then QL Discos are to be used and Doddington Hall will arrange this. If the client is to hire a 'live band' then this must be authorised by Doddington Hall and the band must adhere to Doddington Hall noise restrictions. All music to be provided must be approved by the venue in advance.
- 19 The Client is responsible for ensuring that all music ends by 11.30pm and guests have left the premises by 12.00am at which time the venue will be locked.
- 20 No tape, blu tack or drawing pins may be used on the walls, floors and doors.
- 21 Doddington Hall will not be liable whatsoever to clients or any person claiming through clients, for any loss or damage caused by, or arising from, its failure to carry out any obligations under this agreement due to anything beyond the control of Doddington Hall.
- 22 Doddington Hall will not be responsible for the loss, damage or theft of any items belonging to any member of the event party such as cars, cameras etc. or those of service providers, such as photographers, bands or transport.
- 23 We strongly advise that clients take out insurance to cover the unlikely event of cancellation.
- 24 The Client accepts responsibility for any extra charges incurred.
- 25 VAT is payable on all charges made by Doddington Hall.
- 26 Any change to this contract must be initialled by all the signatories to it.
- 27 All bookings made arising out of this agreement will be deemed subject to the above conditions.